



TMS

ESTATE AGENTS



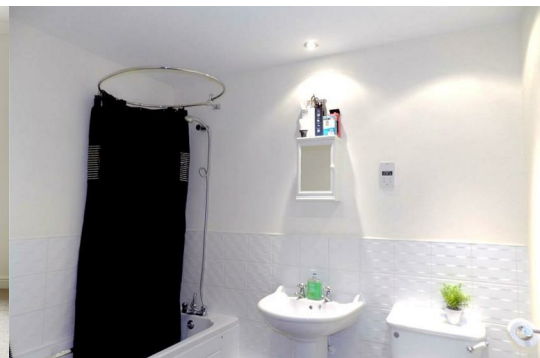
43 George Roche Road, Canterbury, CT1

£1,395 Per Month



- Available August 2026
- Unfurnished Property
- Close To Mainline Station
- Allocated Parking & Guest Parking

- 2 Bedroom Apartment
- En Suite
- Close to Canterbury Town Centre



AVAILABLE AUGUST 2026 ~ 2 BEDROOM 2 BATHROOM ~ GROUND FLOOR APARTMENT ~ SOUGHT AFTER DEVELOPMENT.

TMS Estate Agents are pleased to offer to the market this unfurnished, very spacious, bright and attractive apartment in South Canterbury.

The apartment benefits from a large open plan lounge/diner, a lovely fitted kitchen with room for a breakfast table, two double bedrooms, one with en-suite double shower, and a family bathroom. There is allocated parking for one car.

Additional benefits include Juliet balconies, double glazing and gas central heating.

George Roche Road is situated within easy walking distance to the city centre and Kent and Canterbury hospital and Canterbury east train station are just a short distance away.

Perfect for tenants who are sharing, a small family or professional tenants who work from home.

Council Tax band D / Deposit = 5 weeks rent £1609.61 / EPC - C / holding deposit £321.92
For broadband speeds and phone coverage. please check through checker.ofcom.org.uk

For broadband speeds and phone coverage. please check through checker.ofcom.org.uk

APPLICANTS WILL BE REQUIRED TO SHOW A MINIMUM TOTAL INCOME OF £41,850 PER ANNUM TO MEET AFFORDABILITY FOR THIS PROPERTY

Contact TMS ESTATE AGENTS today to book your accompanied viewing,

COMMUNAL ENTRANCE

APARTMENT

Entrance Hall

Lounge 15'3" x 13'5" (4.67 x 4.10)

Dining Room 12'1" x 7'10" (3.69 x 2.39)

Kitchen 8'7" x 7'9" (2.63 x 2.37)

Bedroom 1 13'11" x 12'0" (4.26 x 3.68)

En Suite Shower

Bedroom 2 9'0" x 8'7" (2.76 x 2.62)

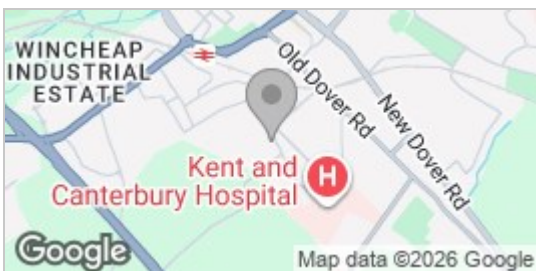
Bathroom

EXTERNAL

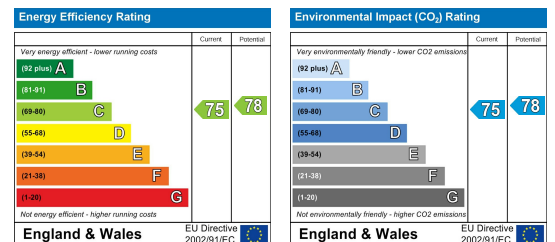
Parking

1 Allocated parking space

Area Map



Energy Efficiency Graph



These particulars, whilst believed to be accurate are set out as a general outline only for guidance and do not constitute any part of an offer or contract. Intending purchasers should not rely on them as statements of representation of fact, but must satisfy themselves by inspection or otherwise as to their accuracy. No person in this firm's employment has the authority to make or give any representation or warranty in respect of the property.